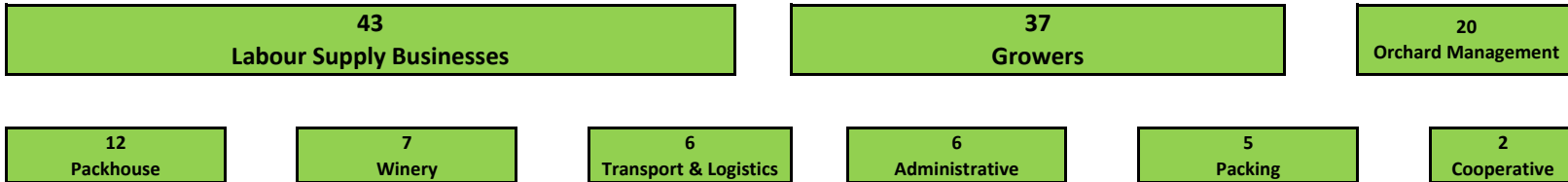


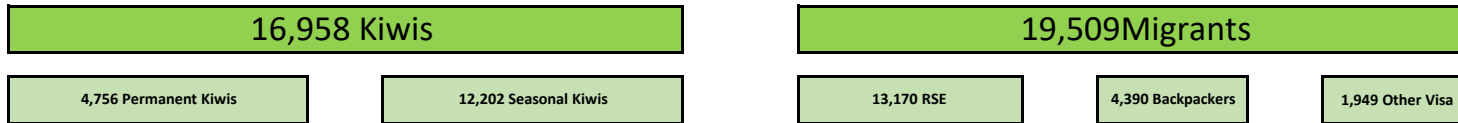
NZ ETHICAL EMPLOYERS INC. MEMBERSHIP AND COMPLIANCE FRAMEWORK

Membership as at 13 October 2023

Membership of NZ Ethical Employers



Membership of NZ Ethical Employers Employ 36,467 people

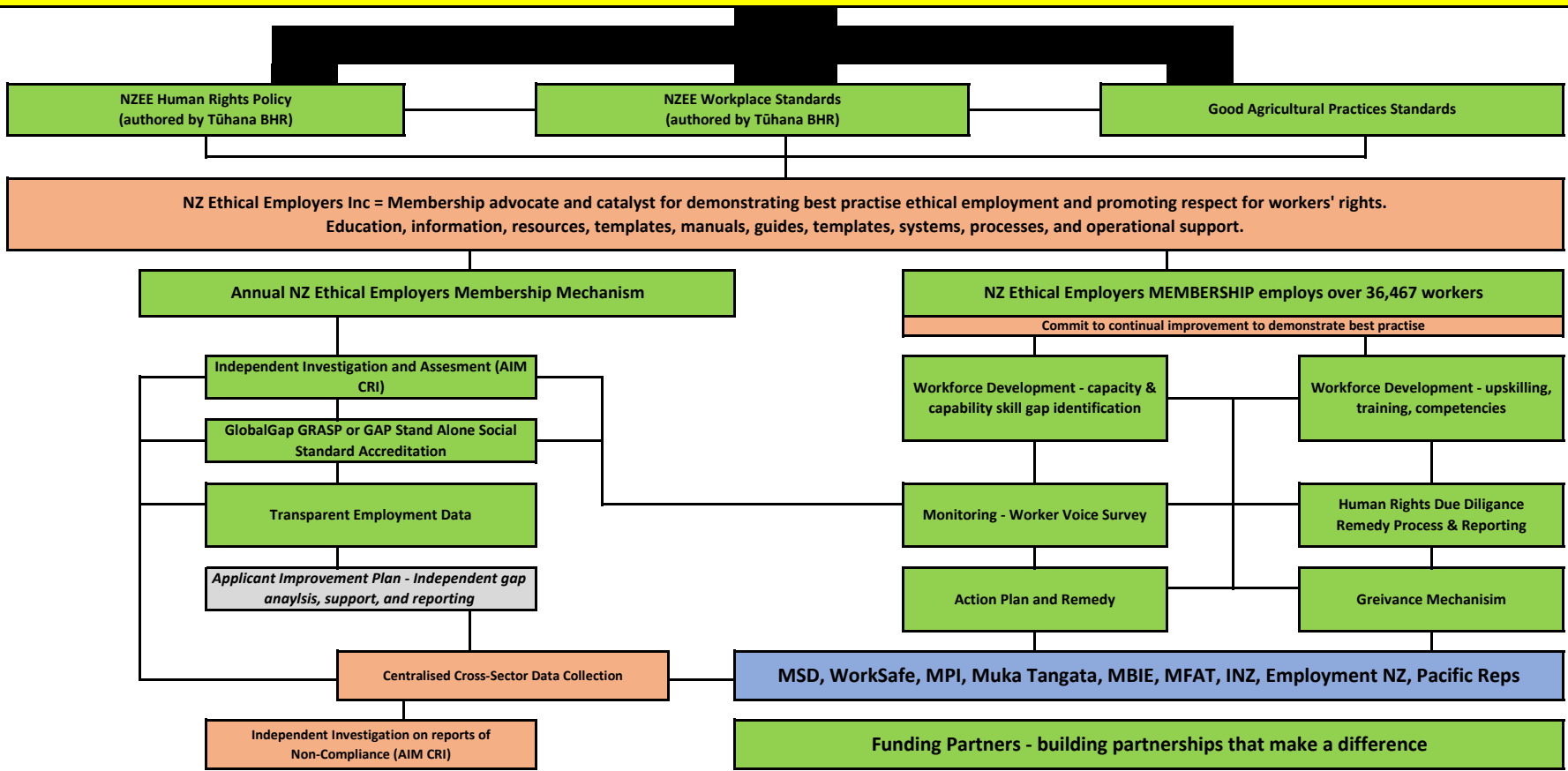


Membership of NZ Ethical Employers cover 67,381ha of hort/vit crops grown across NZ



NZ ETHICAL EMPLOYERS INC. MEMBERSHIP AND COMPLIANCE FRAMEWORK



UNITED NATIONS GUIDING PRINCIPLES on Business and Human Rights (UNGPs) & OECD-FAO Guidance for Responsible Agricultural Supply Chains



OUTCOME : NZEE members demonstrate NZ & international best practise in respecting internationally recognised Human Rights, including labour rights, that enables supply chain integrity & market acceptance of the products of the Aotearoa New Zealand primary sector

Foundational Principles drives everything NZEE does
 Underway, or in process

NZ ETHICAL EMPLOYERS INC. MEMBERSHIP AND COMPLIANCE FRAMEWORK

 Requires funding and/or resources
 Key Stakeholders who receive NZEE data